

Machine Vision

lecture 5. Part 3

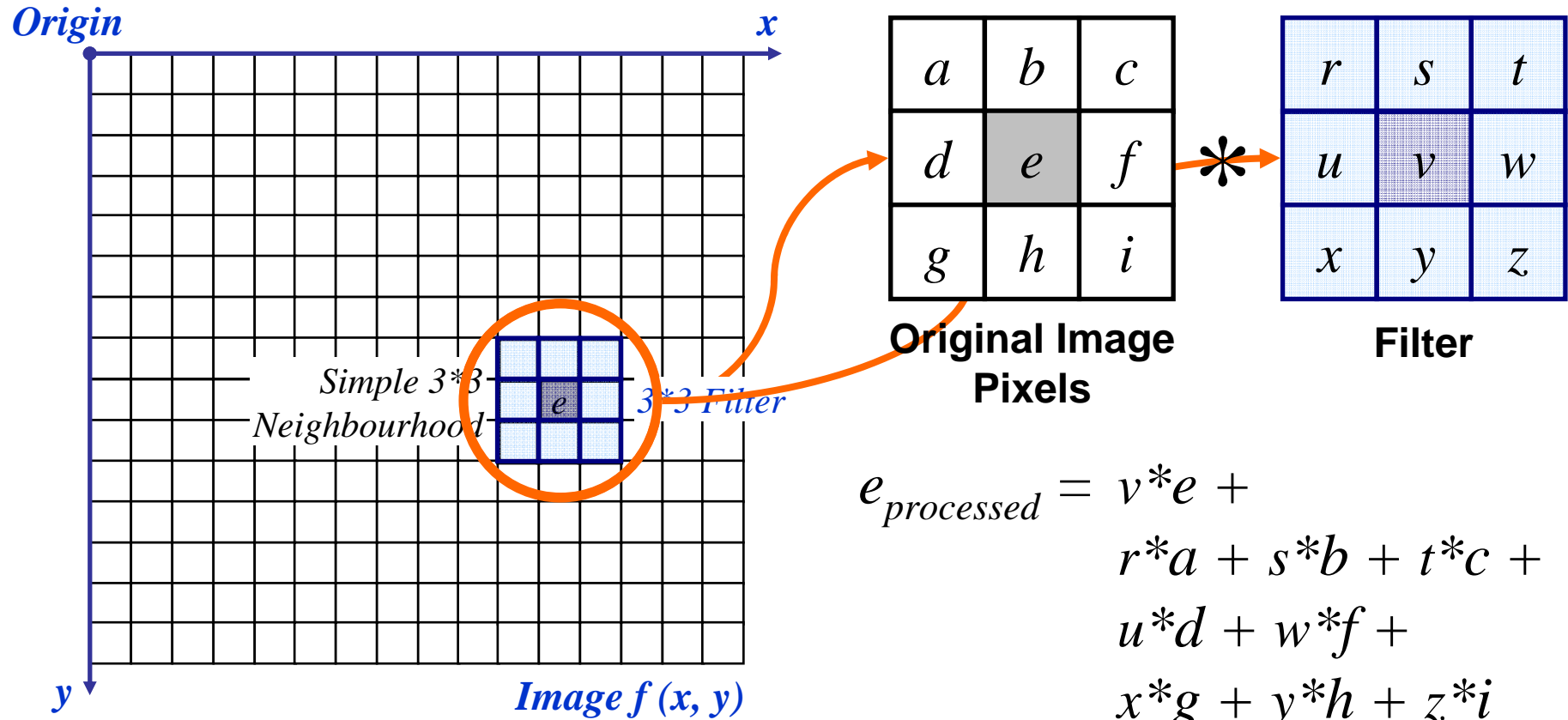
Spatial Filtering

Based on lectures of
Brian Mac Namee

In this lecture we will look at more spatial filtering techniques

- Spatial filtering refresher
- Sharpening filters
 - 1st derivative filters
 - 2nd derivative filters
- Combining filtering techniques

Spatial Filtering Refresher



The above is repeated for every pixel in the original image to generate the smoothed image

Sharpening Spatial Filters

Previously we have looked at smoothing filters which remove fine detail

Sharpening spatial filters seek to highlight fine detail

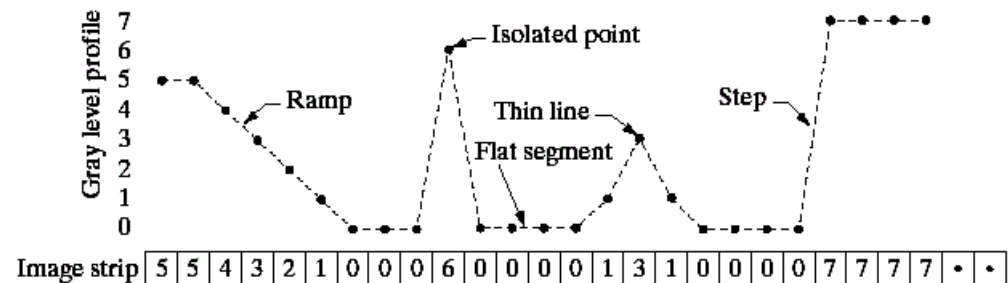
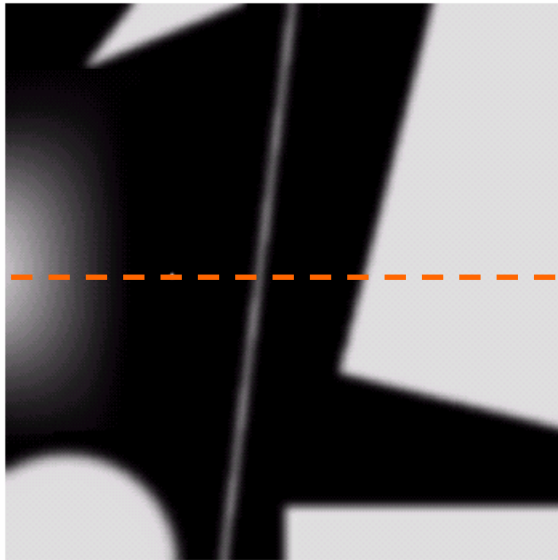
- Remove blurring from images
- Highlight edges

Sharpening filters are based on *spatial differentiation*

Spatial Differentiation

Differentiation measures the *rate of change* of a function

Let's consider a simple 1 dimensional example

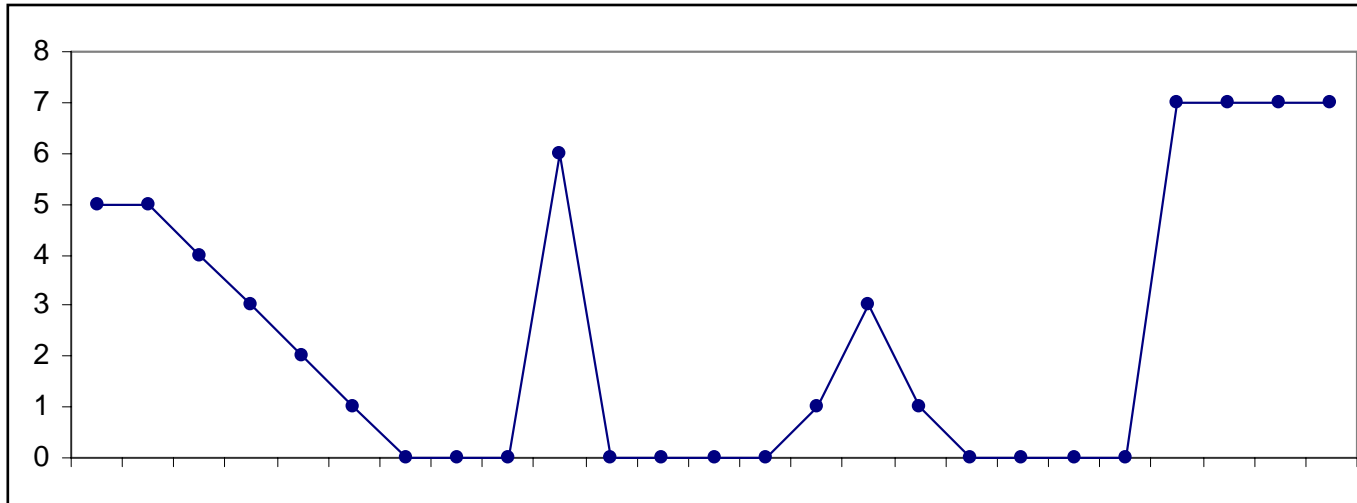


The formula for the 1st derivative of a function is as follows:

$$\frac{\partial f}{\partial x} = f(x+1) - f(x)$$

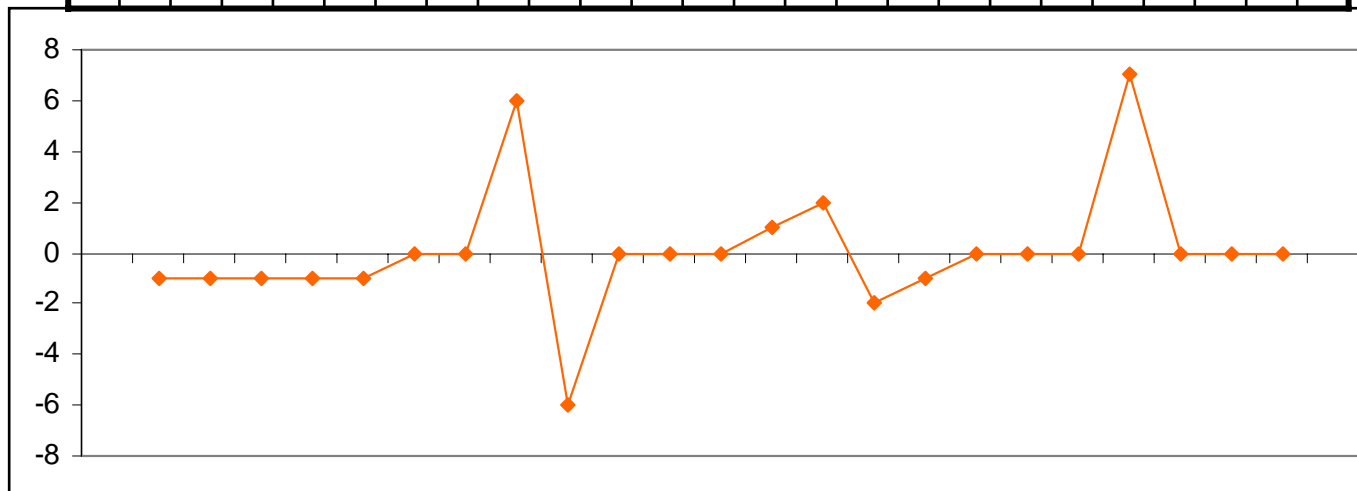
It's just the difference between subsequent values and measures the rate of change of the function

1st Derivative (cont...)



5 5 4 3 2 1 0 0 0 6 0 0 0 0 1 3 1 0 0 0 0 7 7 7 7

0 -1 -1 -1 -1 0 0 6 -6 0 0 0 1 2 -2 -1 0 0 0 7 0 0 0

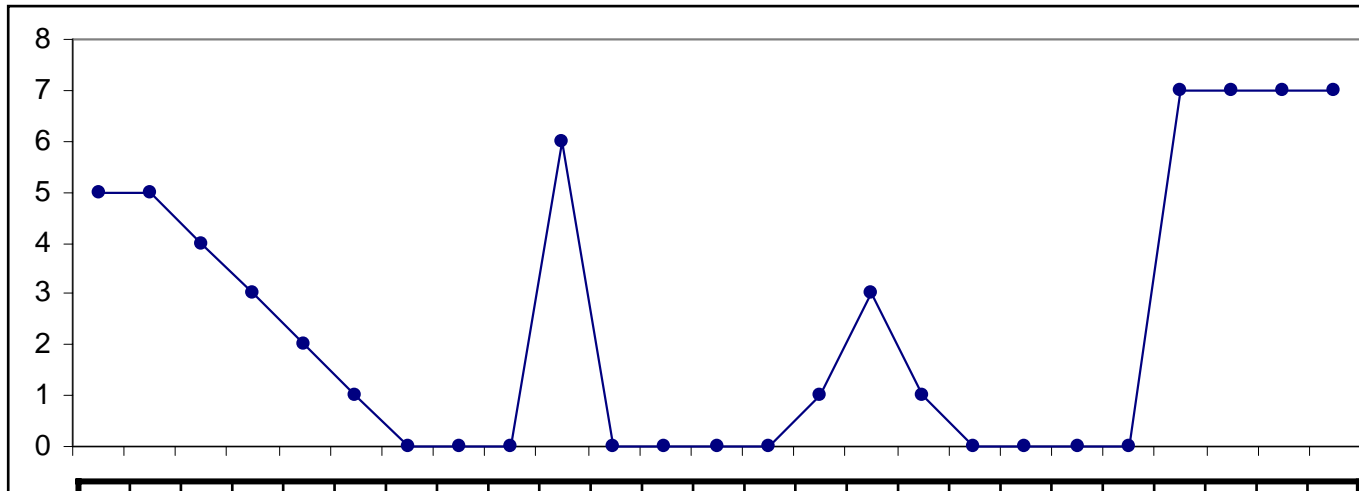


The formula for the 2nd derivative of a function is as follows:

$$\frac{\partial^2 f}{\partial^2 x} = f(x+1) + f(x-1) - 2f(x)$$

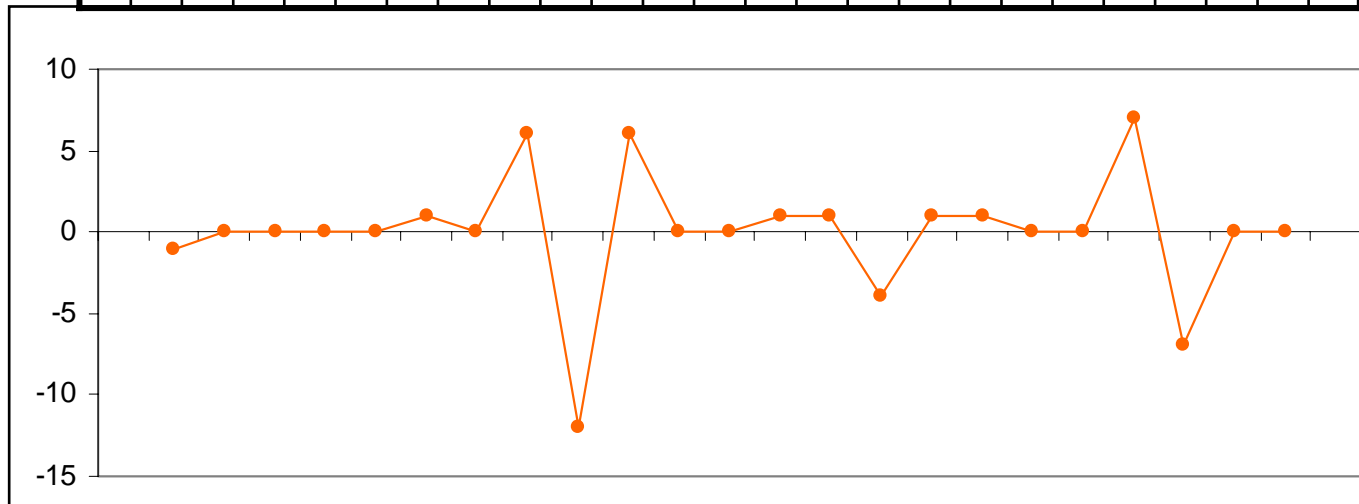
Simply takes into account the values both before and after the current value

2nd Derivative (cont...)



5	5	4	3	2	1	0	0	0	6	0	0	0	0	1	3	1	0	0	0	0	7	7	7	7
---	---	---	---	---	---	---	---	---	---	---	---	---	---	---	---	---	---	---	---	---	---	---	---	---

-1	0	0	0	0	1	0	6	-12	6	0	0	1	1	-4	1	1	0	0	7	-7	0	0
----	---	---	---	---	---	---	---	-----	---	---	---	---	---	----	---	---	---	---	---	----	---	---



Comparing the 1st and 2nd derivatives we can conclude the following:

- 1st order derivatives generally produce thicker edges
- 2nd order derivatives have a stronger response to fine detail e.g. thin lines
- 1st order derivatives have stronger response to grey level step
- 2nd order derivatives produce a double response at step changes in grey level

Using Second Derivatives For Image Enhancement

The 2nd derivative is more useful for image enhancement than the 1st derivative

- Stronger response to fine detail
- Simpler implementation
- We will come back to the 1st order derivative later on

The first sharpening filter we will look at is the *Laplacian*

- Isotropic
- One of the simplest sharpening filters
- We will look at a digital implementation

The Laplacian is defined as follows:

$$\nabla^2 f = \frac{\partial^2 f}{\partial^2 x} + \frac{\partial^2 f}{\partial^2 y}$$

where the partial 1st order derivative in the x direction is defined as follows:

$$\frac{\partial^2 f}{\partial^2 x} = f(x+1, y) + f(x-1, y) - 2f(x, y)$$

and in the y direction as follows:

$$\frac{\partial^2 f}{\partial^2 y} = f(x, y+1) + f(x, y-1) - 2f(x, y)$$

The Laplacian (cont...)

So, the Laplacian can be given as follows:

$$\begin{aligned}\nabla^2 f = & [f(x+1, y) + f(x-1, y) \\ & + f(x, y+1) + f(x, y-1)] \\ & - 4f(x, y)\end{aligned}$$

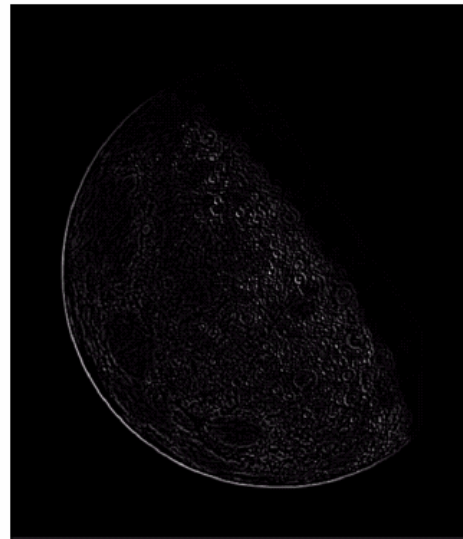
We can easily build a filter based on this

0	1	0
1	-4	1
0	1	0

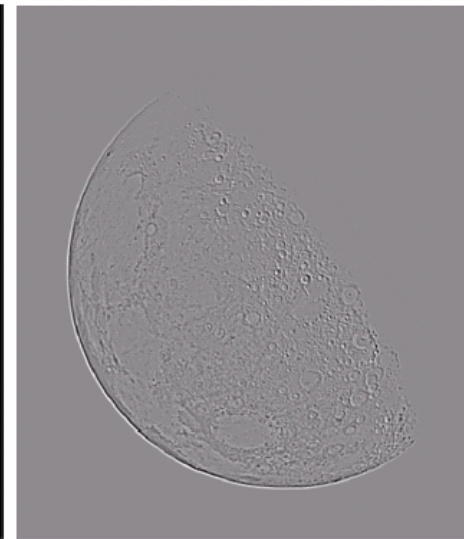
Applying the Laplacian to an image we get a new image that highlights edges and other discontinuities



Original
Image



Laplacian
Filtered Image



Laplacian
Filtered Image
Scaled for Display



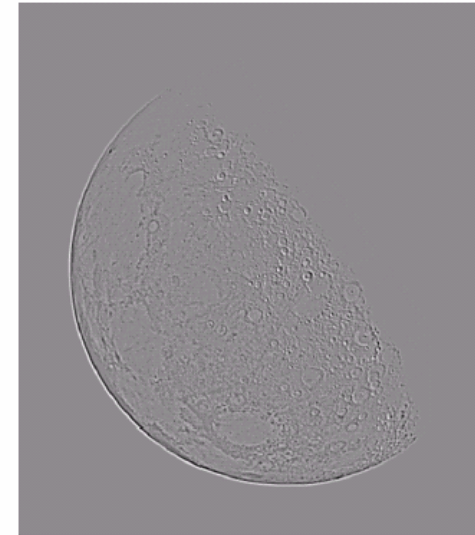
But That Is Not Very Enhanced!

The result of a Laplacian filtering is not an enhanced image

We have to do more work in order to get our final image

Subtract the Laplacian result from the original image to generate our final sharpened enhanced image

$$g(x, y) = f(x, y) - \nabla^2 f$$



Laplacian
Filtered Image
Scaled for Display

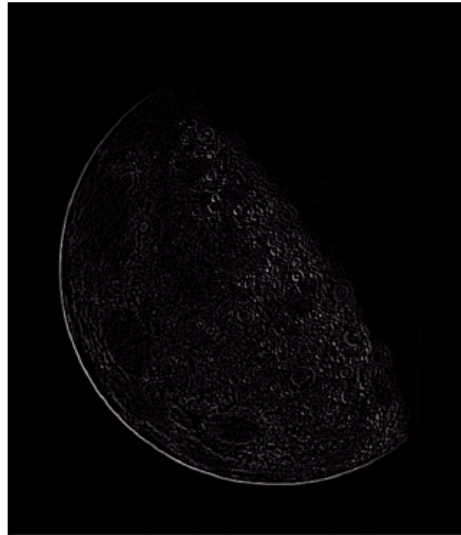


Laplacian Image Enhancement



Original
Image

-



Laplacian
Filtered Image

=



Sharpened
Image

In the final sharpened image edges and fine detail are much more obvious



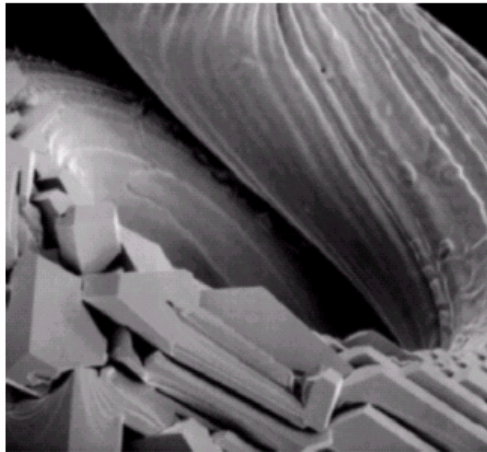
Simplified Image Enhancement

The entire enhancement can be combined into a single filtering operation

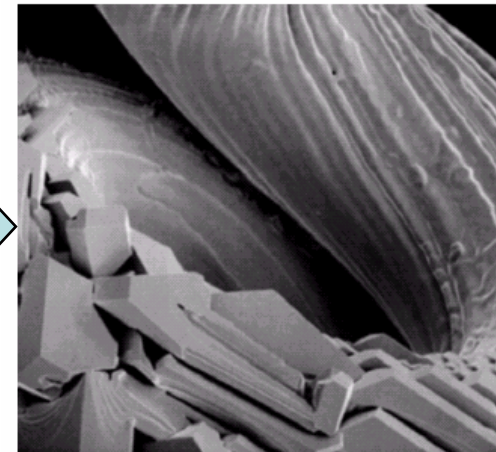
$$\begin{aligned}g(x, y) &= f(x, y) - \nabla^2 f \\ &= f(x, y) - [f(x+1, y) + f(x-1, y) \\ &\quad + f(x, y+1) + f(x, y-1) \\ &\quad - 4f(x, y)] \\ &= 5f(x, y) - f(x+1, y) - f(x-1, y) \\ &\quad - f(x, y+1) - f(x, y-1)\end{aligned}$$

Simplified Image Enhancement (cont...)

This gives us a new filter which does the whole job for us in one step



0	-1	0
-1	5	-1
0	-1	0



Variants On The Simple Laplacian

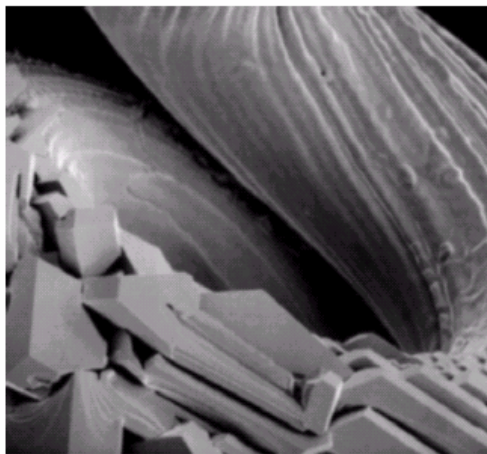
There are lots of slightly different versions of the Laplacian that can be used:

0	1	0
1	-4	1
0	1	0

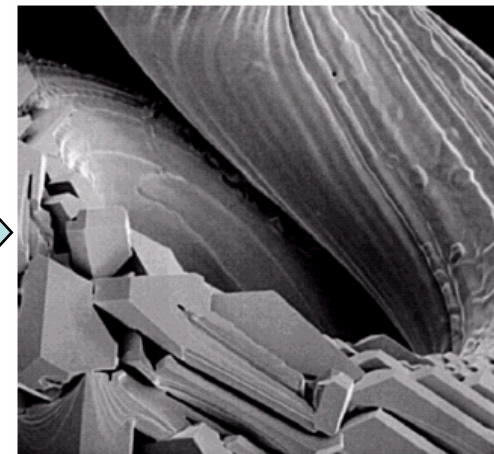
Simple
Laplacian

1	1	1
1	-8	1
1	1	1

Variant of
Laplacian



-1	-1	-1
-1	9	-1
-1	-1	-1



Implementing 1st derivative filters is difficult in practice

For a function $f(x, y)$ the gradient of f at coordinates (x, y) is given as the column vector:

$$\nabla f = \begin{bmatrix} G_x \\ G_y \end{bmatrix} = \begin{bmatrix} \frac{\partial f}{\partial x} \\ \frac{\partial f}{\partial y} \end{bmatrix}$$

1st Derivative Filtering (cont...)

The magnitude of this vector is given by:

$$\begin{aligned}\nabla f &= \text{mag}(\nabla f) \\ &= [G_x^2 + G_y^2]^{1/2} \\ &= \left[\left(\frac{\partial f}{\partial x} \right)^2 + \left(\frac{\partial f}{\partial y} \right)^2 \right]^{1/2}\end{aligned}$$

For practical reasons this can be simplified as:

$$\nabla f \approx |G_x| + |G_y|$$

1st Derivative Filtering (cont...)

There is some debate as to how best to calculate these gradients but we will use:

$$\nabla f \approx \left| (z_7 + 2z_8 + z_9) - (z_1 + 2z_2 + z_3) \right| \\ + \left| (z_3 + 2z_6 + z_9) - (z_1 + 2z_4 + z_7) \right|$$

which is based on these coordinates

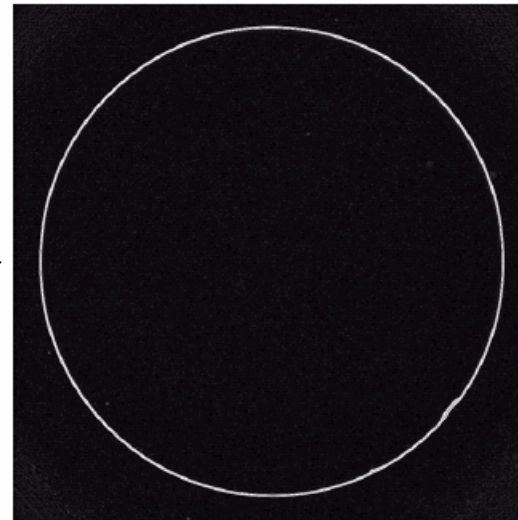
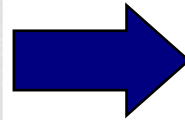
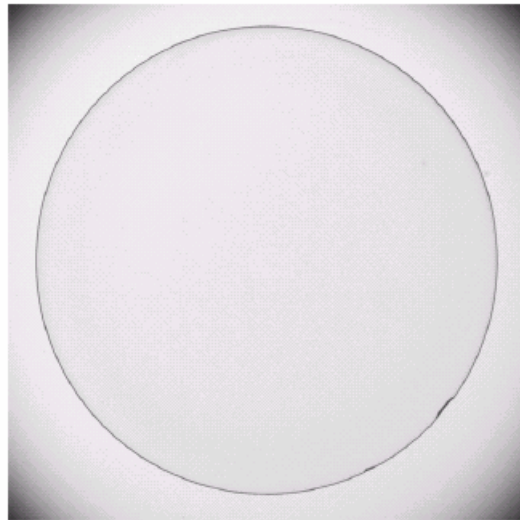
z_1	z_2	z_3
z_4	z_5	z_6
z_7	z_8	z_9

Based on the previous equations we can derive the *Sobel Operators*

-1	-2	-1
0	0	0
1	2	1

-1	0	1
-2	0	2
-1	0	1

To filter an image it is filtered using both operators the results of which are added together



An image of a contact lens which is enhanced in order to make defects (at four and five o'clock in the image) more obvious

Sobel filters are typically used for edge detection

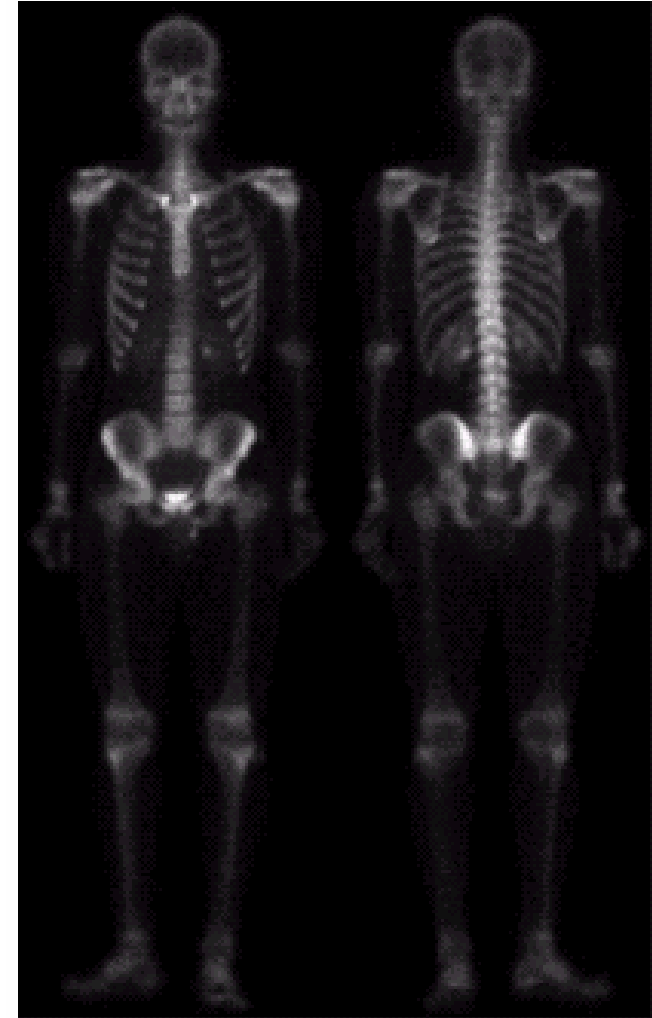


Combining Spatial Enhancement Methods

Successful image enhancement is typically not achieved using a single operation

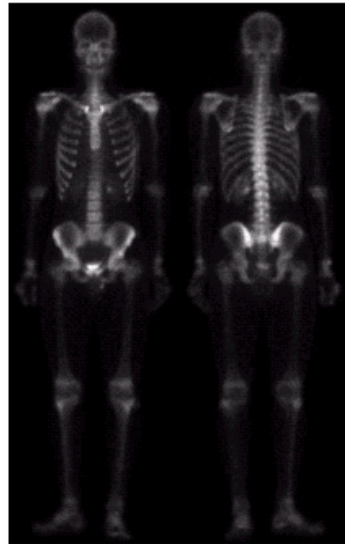
Rather we combine a range of techniques in order to achieve a final result

This example will focus on enhancing the bone scan to the right



Combining Spatial Enhancement Methods (cont...)

Images taken from Gonzalez & Woods, Digital Image Processing (2002)



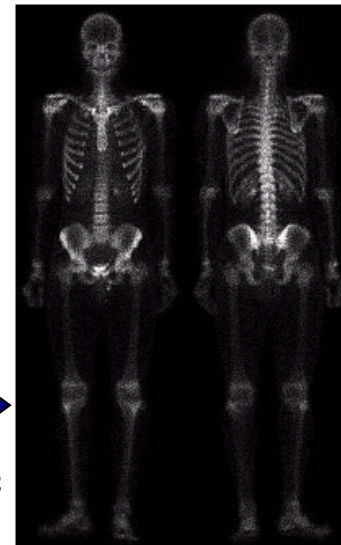
(a)

Laplacian filter of bone scan (a)



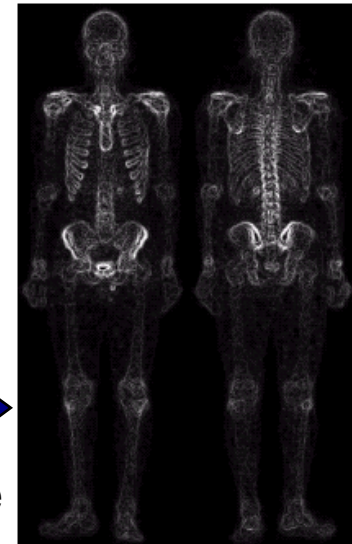
(b)

Sharpened version of bone scan achieved by subtracting (a) and (b)



(c)

Sobel filter of bone scan (a)

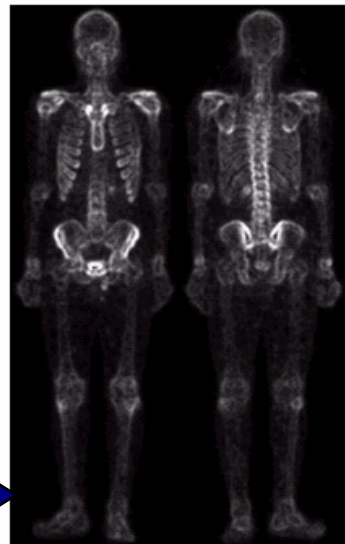


(d)

Combining Spatial Enhancement Methods (cont...)

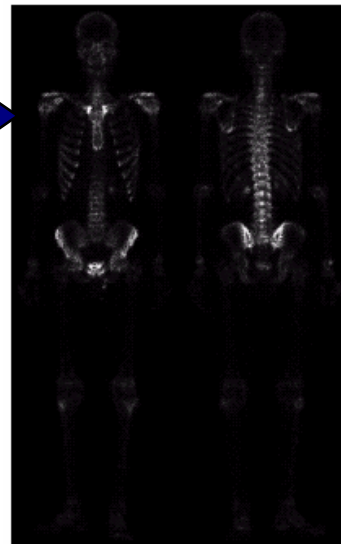
Image taken from Gonzalez & Woods, Digital Image Processing (2002)

The product of (c) and (e) which will be used as a mask



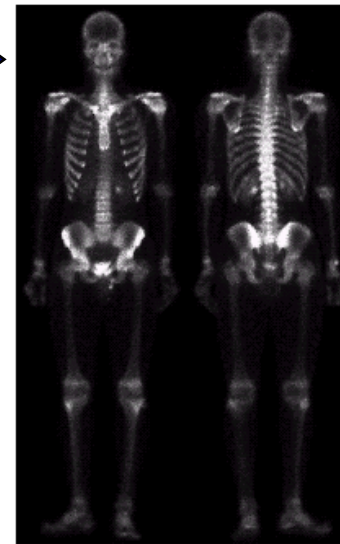
(e)

Sharpened image which is sum of (a) and (f)



(f)

Result of applying a power-law trans. to (g)



(g)

(h)

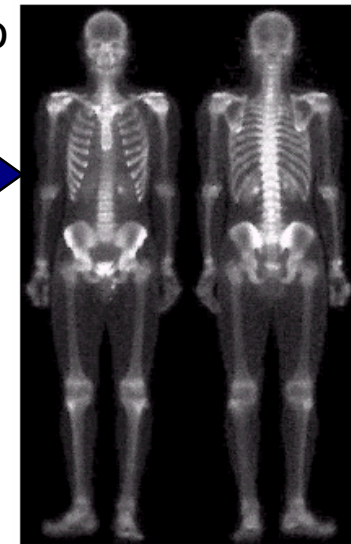


Image (d) smoothed with a 5*5 averaging filter

Combining Spatial Enhancement Methods (cont...)

Compare the original and final images

Images taken from Gonzalez & Woods, Digital Image Processing (2002)



In this lecture we looked at:

- Sharpening filters
 - 1st derivative filters
 - 2nd derivative filters
- Combining filtering techniques